

# Pacific States Marine Fisheries Commission

## John Day Dam Condition Monitoring Weekly Report, #22-13

Report Period: 6/25 – 7/1, 2022

Project Leader: Rick Martinson

Prepared By: Gregory Kovalchuk and Aaron Young



### SECTION 1. River Flow and Sampling Results

	Min	Max	Mean		
			Current	Last Week	2021
A. River Flow	333.5	396.5	372.2	417.5	211.5
B. Powerhouse	198.6	219.0	211.0	233.1	136.8
C. Spill (kcfs)	115.8	178.9	160.2	183.3	73.3
% of River Flow	34.7	45.2	42.8	43.9	34.7
D. Water Temp *	60.8	63.0	62.1	58.0	68.1
E. % Saturation *	115.4	121.6	118.6	117.9	105.7

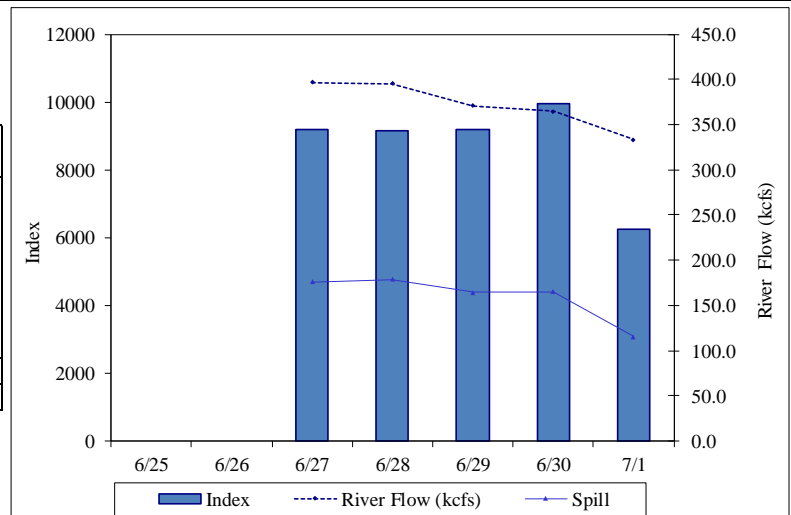
\* TDG data from USGS forebay sensor, water temp from lab and USGS sensor.

% SAMPLE COMPOSITION	This Week	Last Week
YEARLING CHINOOK	0.8%	1.5%
SUBYEARLING CHINOOK	98.8%	94.2%
CHINOOK FRY	0.0%	0.9%
UNCLIPPED STEELHEAD	0.0%	0.6%
CLIPPED STEELHEAD	0.0%	1.9%
COHO	0.0%	0.2%
COHO FRY	0.0%	0.0%
SOCKEYE	0.4%	0.8%

YEARLING CHINOOK							SUBYEARLING CHINOOK					COHO				
End Date	Sample Rate	# Smpld	% Desc	% Mort	# Coll	Index	# Smpld	% Desc	% Mort	# Coll	Index	# Smpld	% Desc	% Mort	# Coll	Index
6/25																
6/26																
6/27	2.0%	0	0.0	0.0	0	0	101	1.0	0.0	5,050	9,113	0	0.0	0.0	0	0
6/28	2.0%	3	33.3	0.0	150	275	97	2.1	0.0	4,850	8,876	0	0.0	0.0	0	0
6/29	2.0%	0	0.0	0.0	0	0	102	2.0	0.0	5,100	9,204	0	0.0	0.0	0	0
6/30	1.7%	1	0.0	0.0	50	92	93	0.0	0.0	5,360	9,813	0	0.0	0.0	0	0
7/1	2.4%	0	0.0	0.0	0	0	97	1.0	0.0	4,075	6,251	0	0.0	0.0	0	0
Weekly		4	25.0	0.0	200	366	490	1.2	0.0	24,435	43,257	0	0.0	0.0	0	0
Season to date		4,666	2.3	0.1	47,604	114,424	2,185	1.4	0.1	58,525	111,608	482	1.9	0.2	5,750	13,608

End Date	Sample Rate	UNCLIPPED					STEELHEAD					CLIPPED					SOCKEYE				
		# Smpld	% Desc	% Mort	# Coll	Index	# Smpld	% Desc	% Mort	# Coll	Index	# Smpld	% Desc	% Mort	# Coll	Index	# Smpld	% Desc	% Mort	# Coll	Index
6/25																					
6/26																					
6/27	2.0%	0	0.0	0.0	0	0	0	0.0	0.0	0	0	0	0.0	0.0	0	0	1	0.0	0.0	50	90
6/28	2.0%	0	0.0	0.0	0	0	0	0.0	0.0	0	0	0	0.0	0.0	0	0	0	0.0	0.0	0	0
6/29	2.0%	0	0.0	0.0	0	0	0	0.0	0.0	0	0	0	0.0	0.0	0	0	0	0.0	0.0	0	0
6/30	1.7%	0	0.0	0.0	0	0	0	0.0	0.0	0	0	0	0.0	0.0	0	0	1	0.0	0.0	20	37
7/1	2.4%	0	0.0	0.0	0	0	0	0.0	0.0	0	0	0	0.0	0.0	0	0	0	0.0	0.0	0	0
Weekly		0	0.0	0.0	0	0	0	0.0	0.0	0	0	0	0.0	0.0	0	0	2	0.0	0.0	70	127
Season to date		333	2.1	0.0	4,386	11,063	1,123	6.5	0.2	12,088	29,055	1,141	3.2	0.2	24,141	59,991					

TOTAL						
End Date	Sample Rate	# Smpld	% Desc	% Mort	# Coll	Index
6/25						
6/26						
6/27	2.0%	102	1.0	0.0	5,100	9,203
6/28	2.0%	100	3.0	0.0	5,000	9,151
6/29	2.0%	102	2.0	0.0	5,100	9,204
6/30	1.7%	95	0.0	0.0	5,430	9,941
7/1	2.4%	97	1.0	0.0	4,075	6,251
Weekly		496	1.4	0.0	24,705	43,750
Season to date		9,930	2.7	0.1	152,494	339,749



Notes: Condition percentages are calculated from sample numbers.  
Subyearling chinook and coho include fry.

Pacific Lamprey						Western Brook			
Macrophthalmia			Ammocoetes			Ammocoetes			
End Date	# Smpld	% Mort	# Coll	# Smpld	% Mort	# Coll	# Smpld	% Mort	# Coll
6/25									
6/26									
6/27	0	0.0	0	0	0.0	0	0	0	0
6/28	0	0.0	0	0	0.0	0	0	0	0
6/29	0	0.0	0	0	0.0	0	0	0	0
6/30	0	0.0	0	0	0.0	0	0	0	0
7/1	0	0.0	0	0	0.0	0	0	0	0
Weekly	0	0.0	0	0	0.0	0	0	0	0
Season to date	320	0.3	4,161	40	0.0	482	0	0	0

## SECTION 2. Smolt and Lamprey Condition Monitoring Summary

		Yearling Chinook		Subyearling Chinook		Unclipped Steelhead		Clipped Steelhead		Coho		Sockeye	
		This Week	Last Week	This Week	Last Week	This Week	Last Week	This Week	Last Week	This Week	Last Week	This Week	Last Week
		Week	Week	Week	Week	Week	Week	Week	Week	Week	Week	Week	Week
SAMPLE #		4	8	490	498	0	3	0	10	0	1	2	4
DESCALING	3-19%			1.8%	1.0%		33.3%						
	>20%			0.2%	1.2%								
	Pred. Desc.	25.0%	12.5%	1.0%	0.8%								
INJURY	BODY			0.4%	0.2%								
	EYE				0.2%								
	HEAD												
	OPERC.				0.4%								
	FIN			1.6%	0.8%			20.0%					
OTHER CONDITIONS	POPEYE				0.2%								
	PINK FIN												
	Fin Discolor.												
DISEASE	FIN HEM.			0.6%	0.6%			30.0%					
	Columnaris												
	FUNGUS												
	BKD			0.2%									
	PARASITES			0.4%									
PREDATION	DEFORMITY			1.8%	1.2%			20.0%					
	EYE HEM.			0.4%									
	BIRD		12.5%	1.2%	0.6%		33.3%						
	FISH	25.0%		1.0%	0.6%								
	LAMPREY												
	OTHER												
end dates		7/1	6/24										

			INJURY					DISEASE and OTHER CONDITIONS					PREDATION	
MP- Macrophthalmia	End Date	SAMPLE #	BODY	EYE	HEAD	FIN	POPEYE	FIN HEM	Columnaris	FUNGUS	DEFORMITY	EYE HEM.	BIRD	FISH
This Week	7/1	0												
Last Week	6/24	17											5.9%	
AP - Ammocoetes	End Date	SAMPLE #												
This Week	7/1	0												
Last Week	6/24	3	33.3%		33.3%			33.3%						

### **SECTION 3. Incidental Summary**

	Bass Largemouth	Bass Smallmouth	Bluegill and Pumpkinseed	Bullhead	Carp	Catfish, Channel	Chiselmouth	Crappie species
This Week	0	3	0	0	0	0	0	1
Season to Date	1	17	11	1	2	1	0	6

	Dace - Longnose	Dace - Speckled	Chinook Jack	Goldfish	Lamprey Adult	Northern Pikeminnow	Peamouth	Perch Yellow
This Week	0	0	0	0	0	0	0	2
Season to Date	0	0	1	1	1	0	0	359

	Redside Shiner	Sand Roller	Sculpin species	Stickleback 3 spine	Sucker species	Shad Adult	Shad Juvenile	Sturgeon White
This Week	0	0	0	0	0	0	0	0
Season to Date	0	0	8	6	1	0	0	0

	Trout Bull	Trout Cutthroat	Trout Rainbow	Walleye	Whitefish Mountain	Siberian Prawn	Chum Salmon	Banded Killifish
This Week	0	0	0	0	0	6	0	0
Season to Date	0	0	0	29	6	118	0	5

### **SECTION 4. Facility Operations**

Condition Monitoring at John Day Dam was originally scheduled to sample Monday through Friday until 15 June, reducing sampling to 3 days a week until river water temperatures reach 70 deg. F. Due to continued high flows and higher than average debris levels at the project, Monday through Friday sampling continued this week. Samples were taken from the Juvenile Bypass System between approximately 0700 and 1300 hrs. Collection, Index, and River flow estimates and averages are for the sample period only. Condition Exams targeted approximately 100 of the predominant species of out-migrant, currently Subyearling Fall Chinook (98.8% composition). Debris at the separator bars and in the sample holding tank was moderate to high for part of the week and consisted of sticks, plastic, and pieces of terrestrial vegetation.

### **SECTION 5. Research**

No research activity occurred during this report period.

## SECTION 6. Pictures



Hatchery Subyearling fall Chinook smolt (*Oncorhynchus tshawytscha*), approximately 62 mm fork length, sampled at the John Day Dam Smolt Facility on 16 June, 2022.



Black crappie (*Pomoxis nigromaculatus*), approximately 90 mm fork length, sampled at the John Day Dam Smolt Facility on 29 June, 2022.